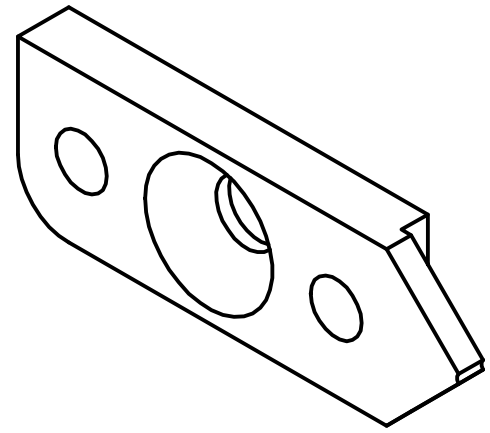
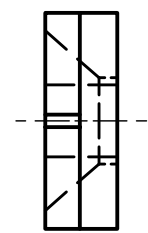
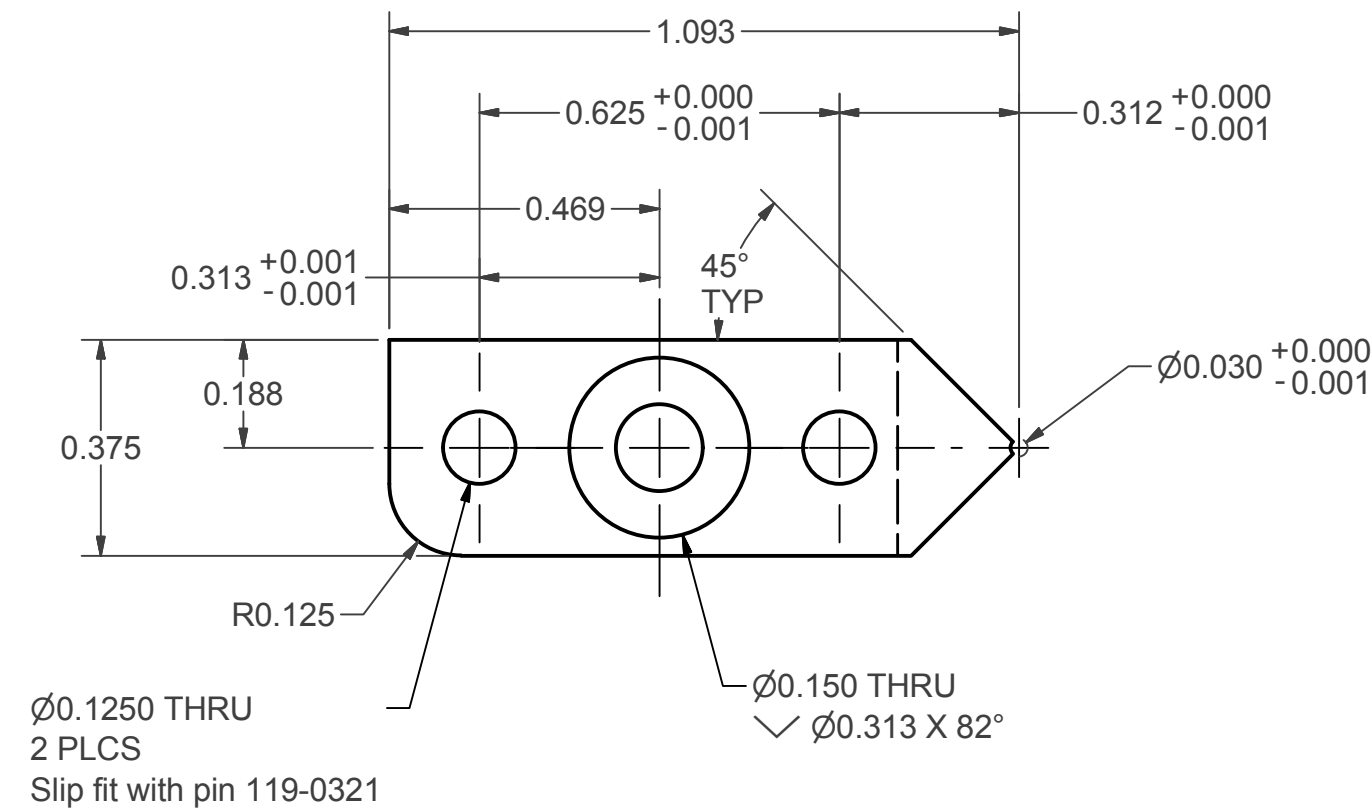
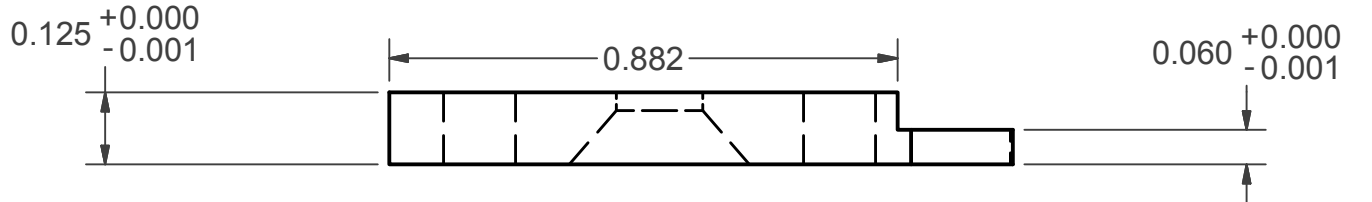


Advanced Polymers, Inc. Confidential

This document contains confidential information of API. This document may be transferred only by way of loan for limited purposes. It must not be reproduced in whole or in part and must be returned to API upon request. Neither this document nor the information it contains may be used or disclosed, without prior written consent of API.

REVISION HISTORY				
ZONE	REV	DESCRIPTION	DATE	APPROVED
	A	ORIGINAL DRAWING		



NOTES:

This document is CONTROLLED only if it appears on blue paper or has original signatures in blue ink.

		29 Northwestern Drive Salem, New Hampshire 03079-2838 USA PH: (603) 327-0600 FAX: (603) 327-0601	
DR	NFELIX	DATE	3/2/2010
CHK		DATE	
APPD		DATE	
MATERIAL	303 SS		
SIZE	B	DWG NO	DWM2981
REV	A		
DO NOT SCALE DRAWING		SCALE	: 1
		SHEET	1 OF 1

UNLESS OTHERWISE SPECIFIED ALL DIMENSIONS ARE IN INCHES	
FRACTIONS	DECIMAL
= ± 1/32	.X = ± .1
	.XX = ± .01
ANGLES	.XXX = ± .005
= ± 1°	.XXXX = ± .0005
SURFACE FINISH = ✓	