

Exercise 1: Design a two impression injection mould to produce golf tee shown in fig.

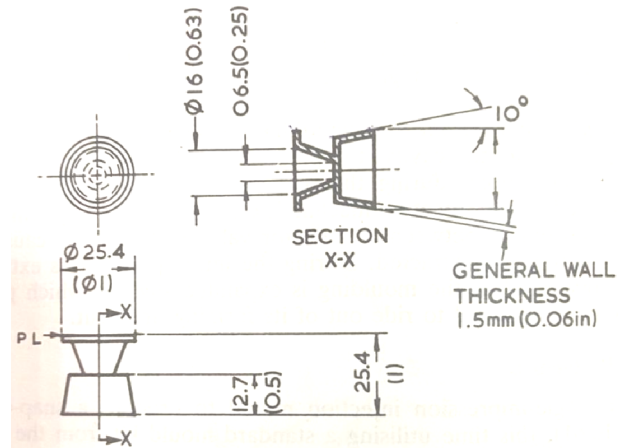


Fig: Indoor golf tee (material PP) for which a two impression mould is required.

Design Steps:

- 1 Study component (undercuts, draft, parting line, parting surface, functional requirement etc)
2. Make 3D model
3. Input shrinkage
4. Extract 2d views
- 5 Estimate/calculate mold size
6. Calculate clamping force
7. Select injection molding machine
8. Start assembled drawing design (front, side top, core half, cavity half views, sectional views ...as required)
9. Make separate manufacturing drawings (all plates top, bottom, Core cavity etc.)