

EDG 1211 FINAL EXAM

Name _____

Section _____

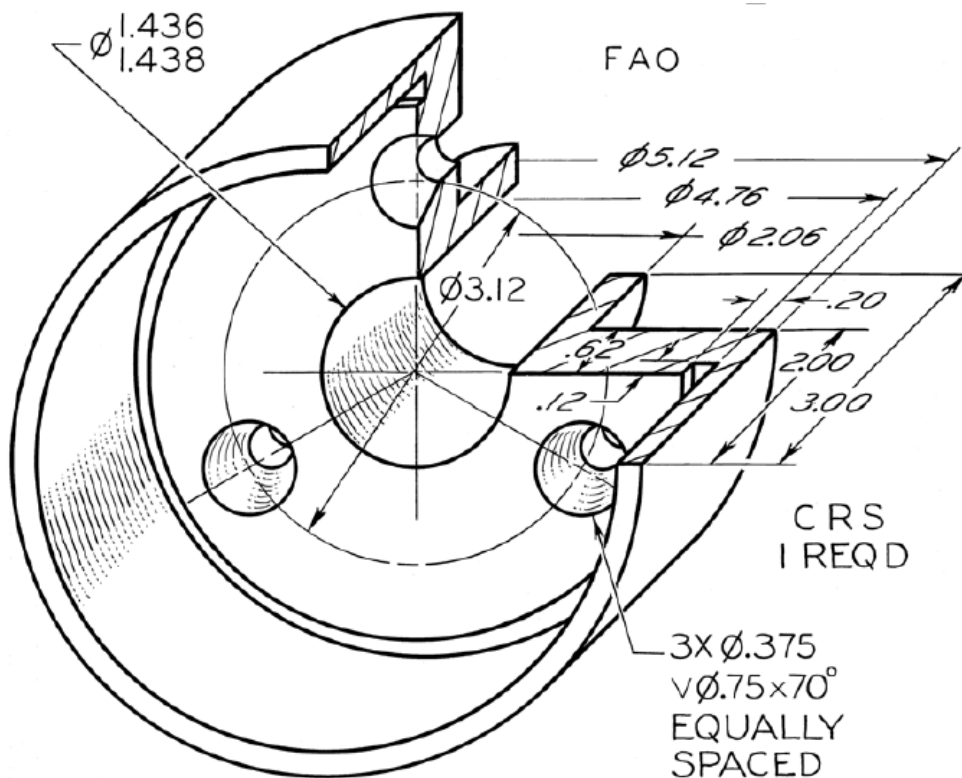
Date _____

INSTRUCTIONS: You may use your class notes. You may not use anyone else's notes or receive help from another student.

Create a 3D model of the SPECIAL BEARING as shown below.

- Use the Revolve command to create the main body.
- Use the Hole Wizard to create one of the outer holes.
- Use Circular Pattern to create the other two outer holes.
- Make the material Aluminum 2014 Alloy.
- Apply a Polished Nickel appearance to the main body revolve. Apply a Burnished Brass appearance to the complete surface of the three outer holes and the center hole.
- Defined a property named MAT1 and assign material to it. Define a property named DEN1 and assign density to it.
- Save your file as *First_Last_Special Bearing.SLDPRT*
- Turn in your 3D model file to the D2L Assignment drop box folder **Final Exam**.

ALL DIMENSIONS IN INCHES.



SPECIAL BEARING