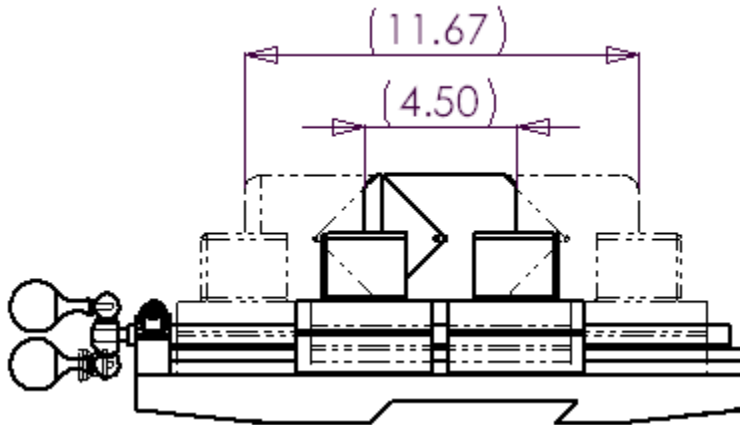


Alternate Position Views indicate the range of motion of an assembly component by showing it in different positions. You can overlay one or more Alternate Position Views on the original view in a phantom font.

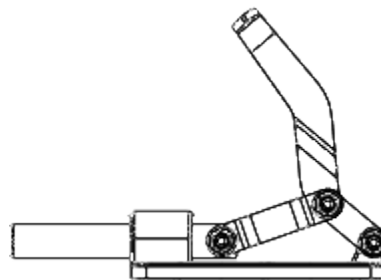
Example of an Alternate Position View:




- You can dimension between the primary view and the Alternate Position View.
- The Alternate Position View is added to the FeatureManager design tree.
- You can create more than one Alternate Position View in a drawing.
- The Alternate Position View is not available in Broken, Section, Crop, or Detail views.
- After you create an Alternate Position View, you can modify it at the assembly and drawing levels.

To insert an alternate position view:

1. Insert a model view of the assembly using the orientation needed for the Alternate Position View. Position the assembly in its starting position.



2. Click **Alternate Position View**  on the Drawing toolbar, or click **Insert, Drawing View, Alternate Position**.

#### The **Alternate Position**

PropertyManager appears. You are prompted to select a drawing view in which to insert the alternate

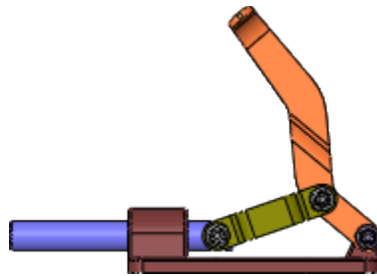
position.

3. Under **Configuration**, choose either:

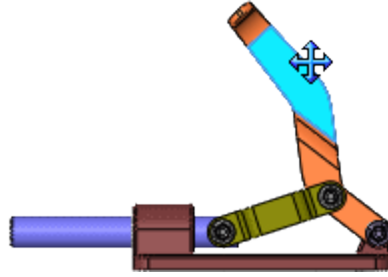
- **New configuration** - to create a new Alternate Position configuration. Accept the default name or type a name of your choice. This option activates the new configuration in the assembly.
- **Existing configuration** - to choose an existing configuration in the assembly document. Select a configuration from the list.

4. Click **OK** ✓. The results are either:

- **New configuration** - If the assembly document is not already open, it opens automatically. The assembly's view orientation changes to that of the drawing view. The assembly appears with the **Move Component** PropertyManager open and **Free Drag** activated. Continue to Step 5.
- **Existing configuration** - The alternate position of the selected configuration appears in the drawing view, and the PropertyManager closes. The view is complete. No further steps are required.

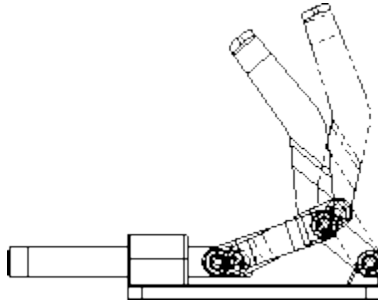


5. Use any of the **Move Component** tools to move the assembly components to the desired position. In the PropertyManager, under **Options**, use **Collision Detection** and **Stop at collision** to stop motion.

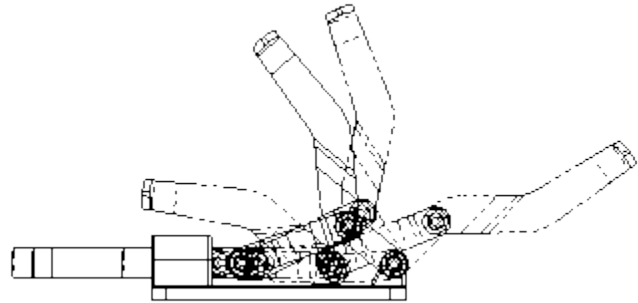


6. Click **OK** ✓ to close the **Move Component** PropertyManager and return to the drawing.

The alternate position of the assembly configuration appears in the drawing view in phantom lines, and the **Alternate Position** PropertyManager closes.



7. Create as many Alternate Position Views as needed using the same steps.



To edit an alternate position view:

- In the assembly, edit a configuration.
- In the drawing, in the FeatureManager design tree, right-click any of the Alternate Position Views and click **Hide** or **Show**.

