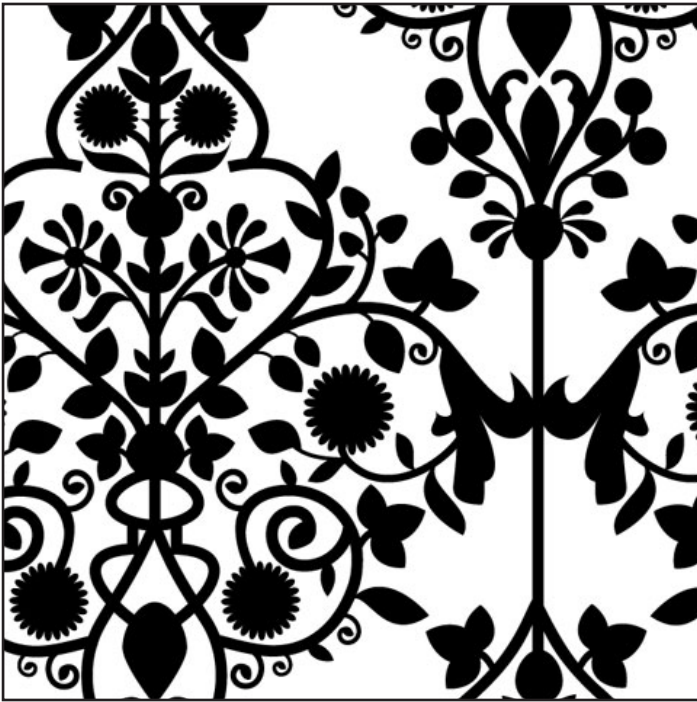


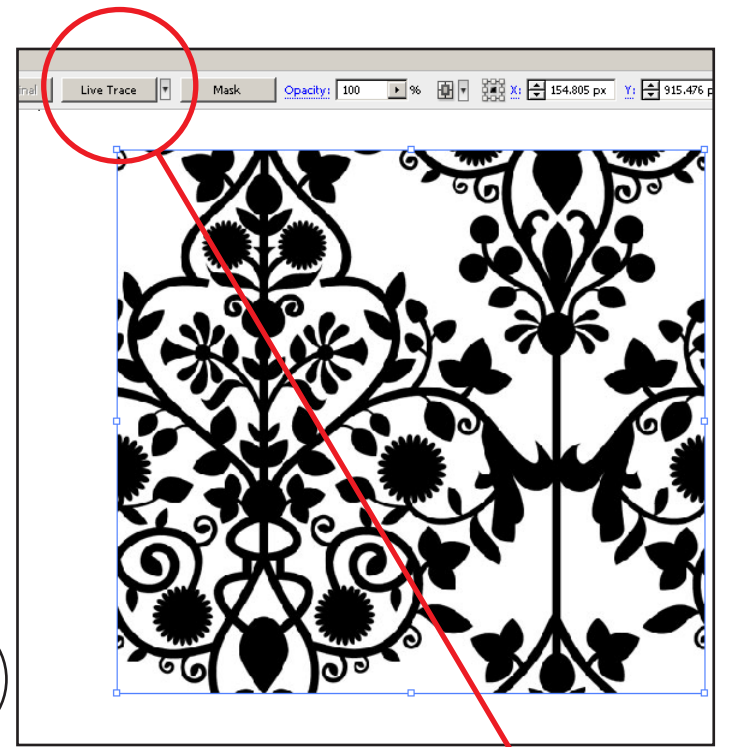
Converting an image to curves for CAD

1



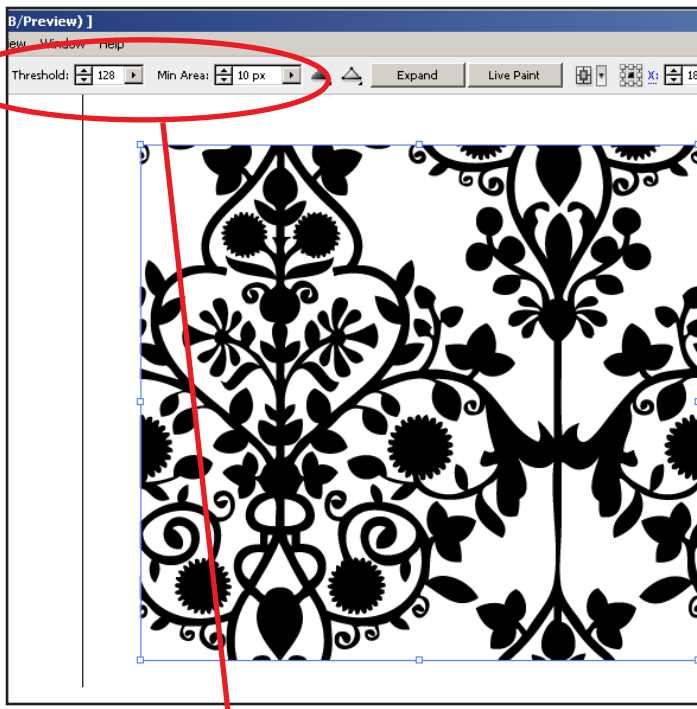
Take an image (e.g. above), save it and then open it in illustrator. Or paste an image into a new illustrator document.

2



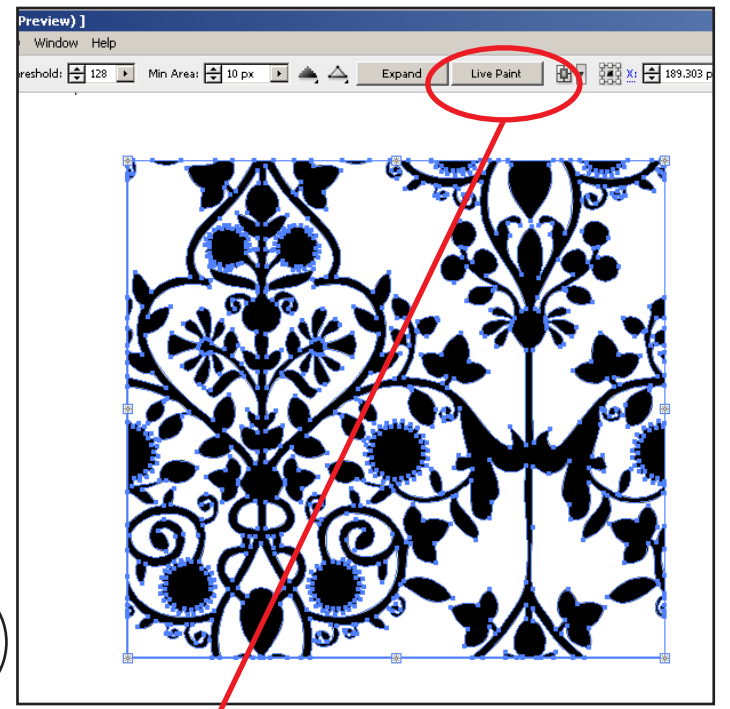
Select the image and click the Live Trace button that appears along the top of the window.

3



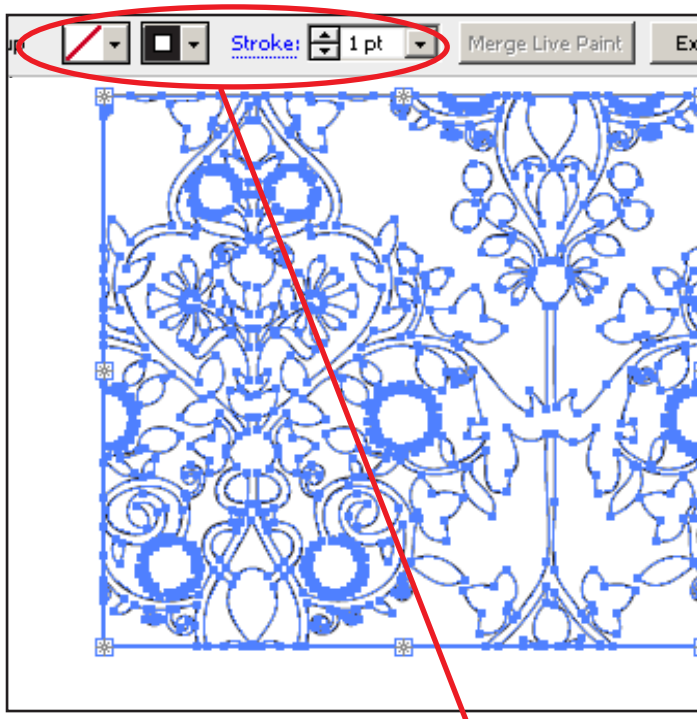
Standard settings are: 'Threshold: 128' and 'Min Area 10px'. Pixels lighter than the Threshold value are converted to white, all pixels darker than the Threshold value are converted to black (threshold option won't show up if in colour mode). The Min Area specifies the smallest feature in the original image that will be traced.

4



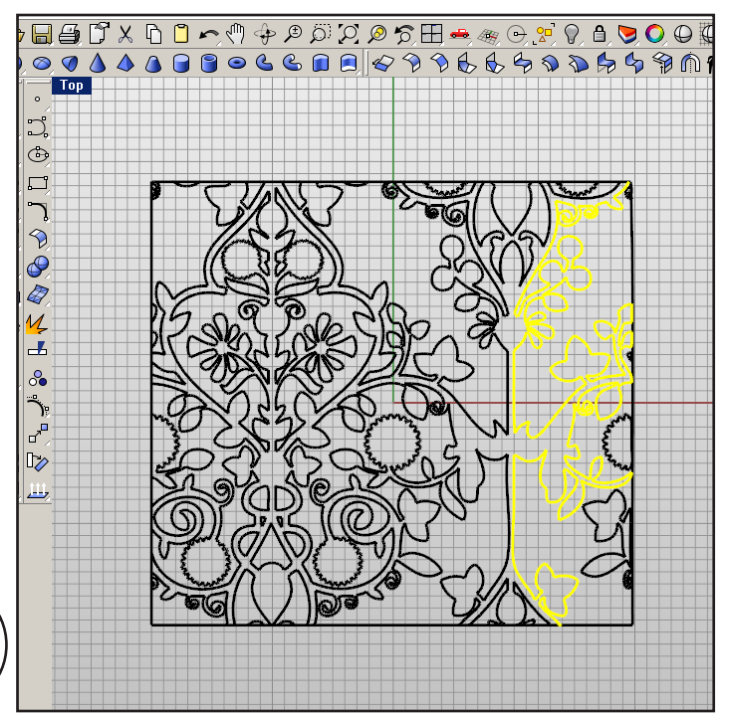
Click the Live Paint button once you have chosen your Live Trace settings. Blue curves will be created around the features within your image (shown above).

5



Ensure you set the colour to none and the stroke to 1px. You can then save as an .ai file and import it as an .ai file in rhino.

6



Start a new Rhino file, then go: File > Import, then select the 'PDF Files' import option allowing you to import your .ai file as curves.