
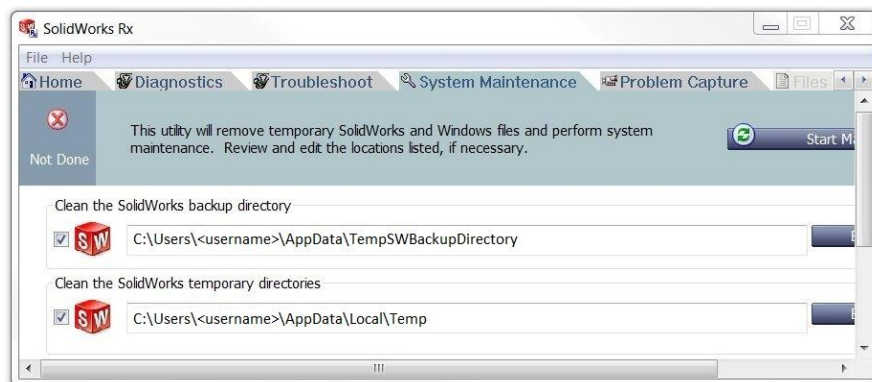


## SolidWorks Complete Uninstall Guide

**\*\* DISCLAIMER:** This document assumes that your installation of SolidWorks was originally installed using the default locations. If your installation location for SolidWorks differs please adjust the techniques below accordingly. The procedures in the following document require access and edits to the windows registry. Any such edits are at your own risk and should only be attempted under the advisement and direction of your IT professional. If you are uncomfortable with executing the procedures below please seek assistance. It is advised to back up your registry and any valued data before making any changes to the system registry. Javelin Technologies assumes no responsibility for any consequences, unintended or otherwise resulting from changes made to the system or the system registry.

### Backup Customizations and Transfer License

1. Backup existing SolidWorks Settings using the Copy Settings Wizard (Keyboard shortcuts, menu customizations and toolbar layouts):
    - a. Go to the Windows **Start** menu > **All Programs** > **SolidWorks 20xx**
    - b. Under the **SolidWorks Tools** folder, choose the “**Copy Settings Wizard**”
    - c. Chose the “**Save Settings**” option & follow the on-screen instructions
- 
2. Backup all customized SolidWorks files (templates, weldment profiles, design library, etc). Any items that have been customized should be copied out of the default SolidWorks directories. Consider storing customized files in a custom location and reference the location in you new installation of SolidWorks under the **Tools** menu > **Options** > **File Locations**.
  3. If running a customized Toolbox on your local machine, backup the Toolbox database; default location **C:\SolidWorks Data**.
  4. Prior to the next steps please start SolidWorks and transfer your Activation back to the SolidWorks Server through **Help** > **Transfer License...**  
<http://www.javelin-tech.com/blog/2012/03/transfer-sw-license/>
  5. Cleanup the SolidWorks temporary directory using the **SolidWorks Rx** tool under **Start** > **All Programs** > **SolidWorks 20xx** > **SolidWorks Tools** > **SolidWorks Rx**. Select the **System Maintenance** tab:



## Complete Uninstall Procedure

6. **IMPORTANT:** Obtain LOCAL administrative rights to the computer. Consult your IT administrator if required.

**NOTE:** Only having DOMAIN administrative rights will not be sufficient. Ensure you have LOCAL rights.

7. **IMPORTANT:** Disable User Account Controls (<http://www.javelin-tech.com/blog/2011/01/uac/>)

- **Windows 7:**

- a. Click **Start** and type **UAC** in the search bar
- b. Drag the slider down to **Never Notify**
- c. Click **OK** and restart your computer

- **Windows 8:**

- a. Press the Windows key on the keyboard
- b. Type “**uac**” to start the search (without quotations)
- c. Select **Settings** under the search box on the right
- d. Select **Change User Account Control settings**
- e. Drag the slider down to **Never Notify**
- f. Click **OK** and restart your computer

8. **IMPORTANT:** Disable any anti-virus or anti-spyware programs currently in use. Consult your IT administrator if required (<http://www.javelin-tech.com/blog/2011/06/disable-antivirus/>)

- a. From the Windows **Start** menu, select or type **Run** and then type **Services.msc**
- b. Browse to any anti-virus/spyware programs in the list, right click and “stop” the services

**NOTE:** Some antivirus programs cannot be stopped from Services. If this is the case, disable the live protection through the program itself. In extreme cases, uninstalling the antivirus program may be required.

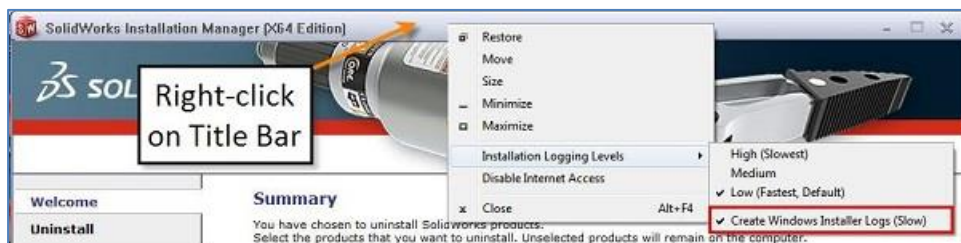
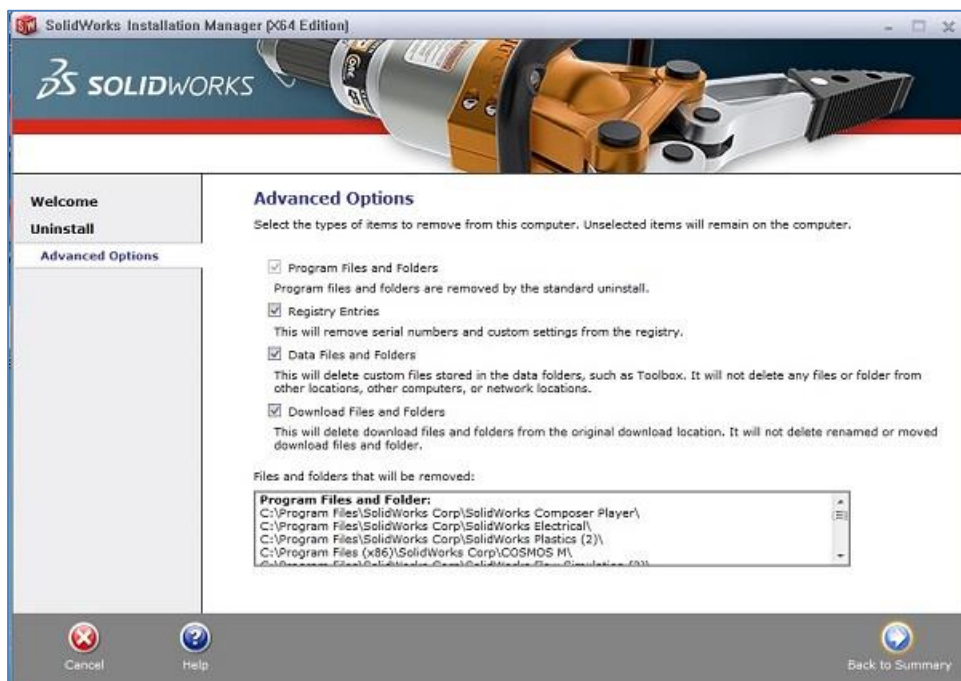
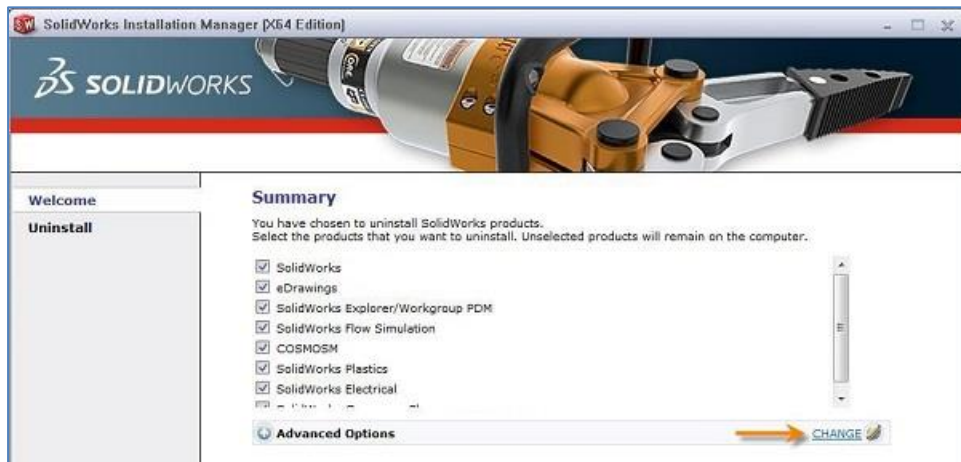
**WARNING:** BitDefender antivirus has been known to cause instability with Windows when reinstalling the Microsoft prerequisite programs (.NET, Visual C++, VSTA). This program cannot be stopped and needs to be uninstalled prior to uninstalling and reinstalling SolidWorks.

9. Using “**Programs and Features**” in the Windows Control Panel, uninstall the following programs:

- a. Any add-on products (eDrawings, PDM/Works, DWGEditor, 2D Editor, etc – these may not be present)
- b. Older versions of SolidWorks (if applicable)
- c. Current version of SolidWorks

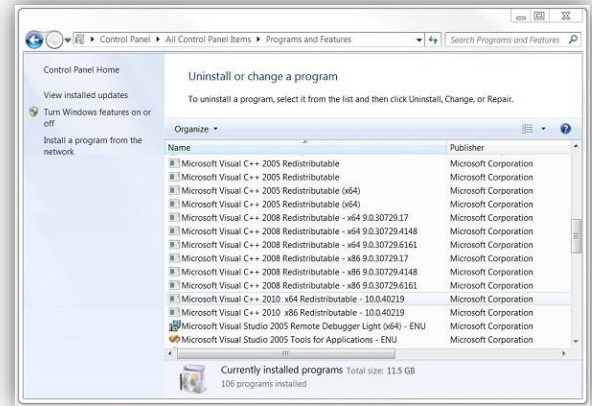
When uninstalling SolidWorks:

- Be sure all products are selected to uninstall
- Click “Change” beside Advanced Options and select all options
- Right-click on the Title Bar in the Installation Manager > Installation Logging Levels > “Create Windows Installer Logs”



10. Using “**Programs and Features**” in the Windows Control Panel, uninstall the following Windows prerequisite programs in this order:

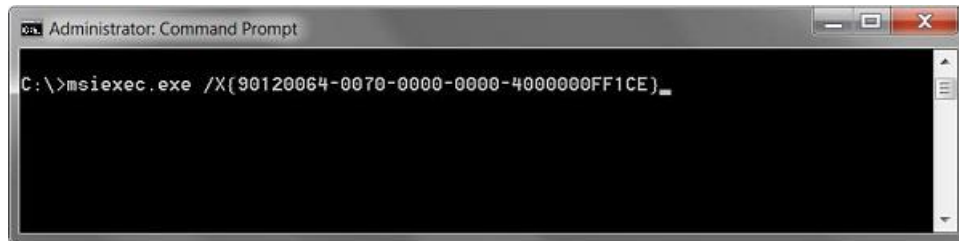
- All Microsoft Visual C++ 2005
- All Microsoft Visual C++ 2008
- All Microsoft Visual C++ 2010
- All Microsoft Visual C++ 2012
- Microsoft Visual Studio 2005 Remote Debugger
- Microsoft Visual Studio 2005 Tools for Applications



NOTE: Programs listed together for clarity

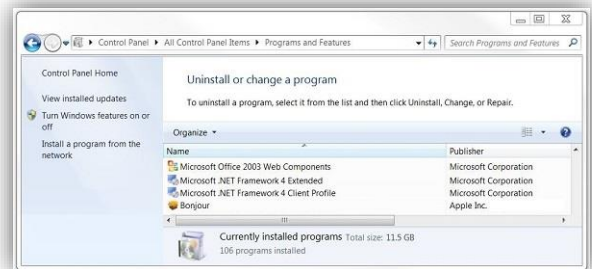
11. **FOR SOLIDWORKS 2013 AND NEWER:** Uninstall Visual Basic 7.1

- Open the Command Prompt (Start > All Programs > Accessories > Right-click on Command Prompt and “Run as Administrator”)
- Type `msiexec.exe /X{90120064-0070-0000-0000-4000000FF1CE}`



12. Using “**Programs and Features**” in the Windows Control Panel, uninstall the following Windows prerequisite programs in this order:

- Microsoft Office 2003 Web Components
- Microsoft .NET Framework 4.5.1
- Microsoft .NET Framework 4 Extended
- Microsoft .NET Framework 4 Client Profile
- Bonjour



NOTE: Programs listed together for clarity

13. Remove the Windows Registry keys relative to SolidWorks after uninstalling all products.

- a. From the Windows **Start** menu, type **regedit** in the search box
- b. In the Registry Editor, delete the keys below.

**NOTE:** Some of the keys listed may not be present on your system.

**Under HKEY\_CURRENT\_USER\Software**

- eDrawings
- SolidWorks  
***IMPORTANT:** if you are using Enterprise PDM, DO NOT DELETE the **SolidWorks** key; instead, go into this key and delete only the **IM** & **SolidWorks 20xx** subkeys; leaving everything else.*
- SolidWorks BackOffice
- SRAC

**Under HKEY\_LOCAL\_MACHINE\Software**

- eDrawings
- SolidWorks  
***IMPORTANT:** if you are using Enterprise PDM, DO NOT DELETE the **SolidWorks** key; instead, go into this key and delete only the **IM** & **SolidWorks 20xx** subkeys; leaving everything else.*
- SolidWorks Corporation
- SRAC

**Under HKEY\_LOCAL\_MACHINE\Software\Wow6432Node**

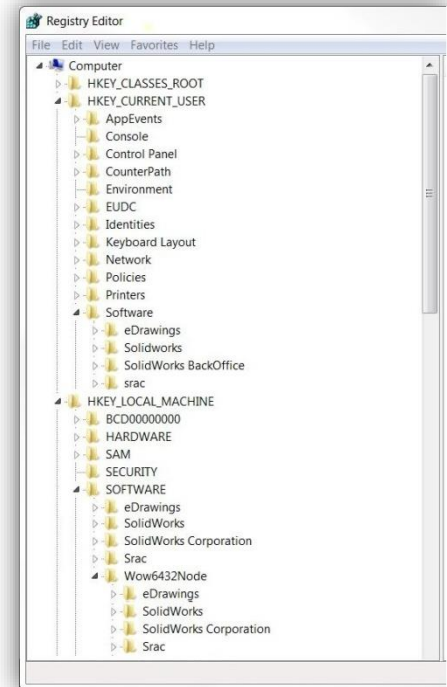
- eDrawings
- SolidWorks
- SolidWorks Corporation
- SRAC

**Under HKEY\_LOCAL\_MACHINE\Software\Microsoft**

- VSTAHOST
- VSTAHostConfig

**Under HKEY\_LOCAL\_MACHINE\Software\Wow6432Node\Microsoft**

- VSTAHOST
- VSTAHostConfig



NOTE: Other Registry Key Folders are Hidden for Clarity



14. Delete the SolidWorks installation directory (*NOTE: not all locations may be present on your system*):

**C:\Program Files\Common Files\Drawings**

**C:\Program Files\Common Files\Drawings<year>**

**C:\Program Files\Common Files\SolidWorks Installation Manager**

**C:\Program Files\Common Files\SolidWorks Shared**

**C:\Program Files (x86)\Common Files\Drawings** (64-bit operating system only)

**C:\Program Files (x86)\Common Files\SolidWorks Installation Manager** (64-bit operating system only)

**C:\Program Files (x86)\Common Files\SolidWorks Shared** (64-bit operating system only)

**C:\Program Files\SolidWorks**

**C:\Program Files\SolidWorks Corp**

**C:\Program Files (x86)\SolidWorksx86** (64-bit operating system only)

**C:\Program Files (x86)\SolidWorks Corp** (64-bit operating system only)

**C:\Program Files\SolidWorks <year> Corp** or the custom location SolidWorks was installed to.

**C:\SolidWorks Data** - delete any duplicates like C:\SolidWorks Data (2)

**\*C:\ProgramData\SolidWorks**

**\*C:\ProgramData\SolidWorks Flow Simulation**

*\*The ProgramData folder is hidden by default. Go to the Control Panel and select Folder Options. Open the View tab and select "Show hidden files, folders and drives" from the list.*

15. If Microsoft .NET Framework errors were indicated, repair Microsoft .NET Framework 3.5.1

a. In the Programs and Features list, click "Turn Windows features on or off" in the left pane

b. Deselect "Microsoft .NET Framework 3.5.1"

c. Click OK and wait for the changes to be made

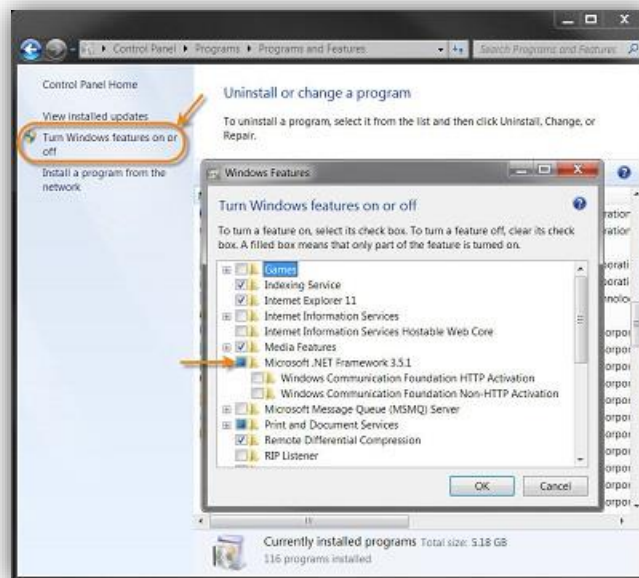
d. Return to "Turn Windows features on or off"

e. Select "Microsoft .NET Framework 3.5.1"

\* Leave "Windows Communication Foundation HTTP Activation" and "Windows Communication Foundation Non-HTTP Activation" deselected

f. Click OK and wait for the change to be made

g. Restart the computer



16. **NOTE:** This step is optional and the utility is USE AT YOUR OWN RISK, but it is recommended if there are Microsoft .NET Framework errors (as .NET Framework 3.5 is built into Windows)

Download and run the utility from the following link:

<http://www.softpedia.com/progDownload/NET-Framework-Cleanup-Tool-Download-116561.html>



Use the following guide if in doubt:

<http://blogs.msdn.com/b/astebner/archive/2008/08/28/8904493.aspx>

17. Reboot your system

## Clean Installation Procedure

For instructions on the best practices when installing SolidWorks, please refer to the appropriate installation guide found on our FAQ webpage at <http://www.javelin-tech.com/main/support/faq.htm>

- SolidWorks Installation Guide Standalone License
- SolidWorks Installation Guide Network License

**IMPORTANT:** Enable Windows Installer Logs when installing



**\*\* Note:** More information regarding the backup and restore of the windows registry may be found at the following URL:  
<http://support.microsoft.com/kb/322756>

**\*\* Note:** Detailed installation instructions may be found by accessing the Help files in the downloaded files or DVD:  
<DVD Drive letter or Download directory>\sldim\lang\english directory

- *install\_guide.chm*
- *admindirector.chm*
- *sldim\_download.chm*