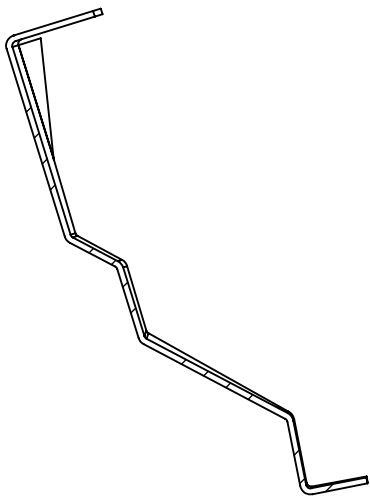
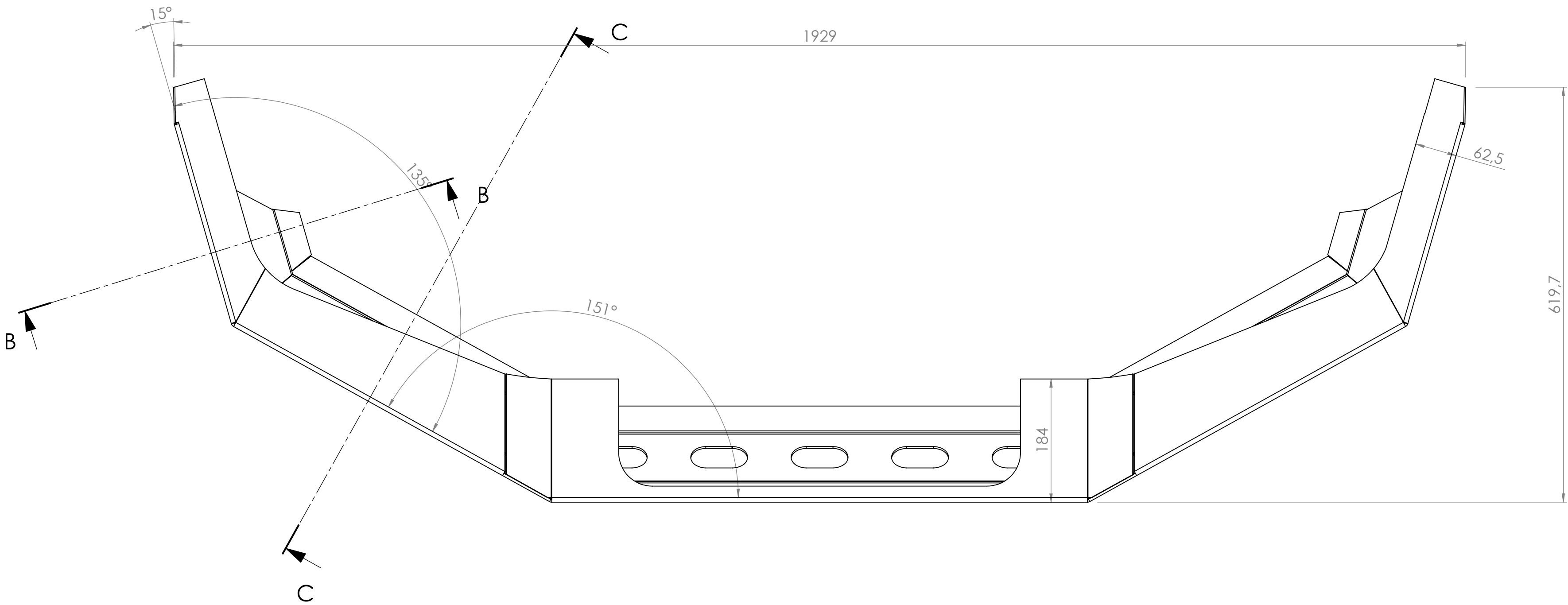
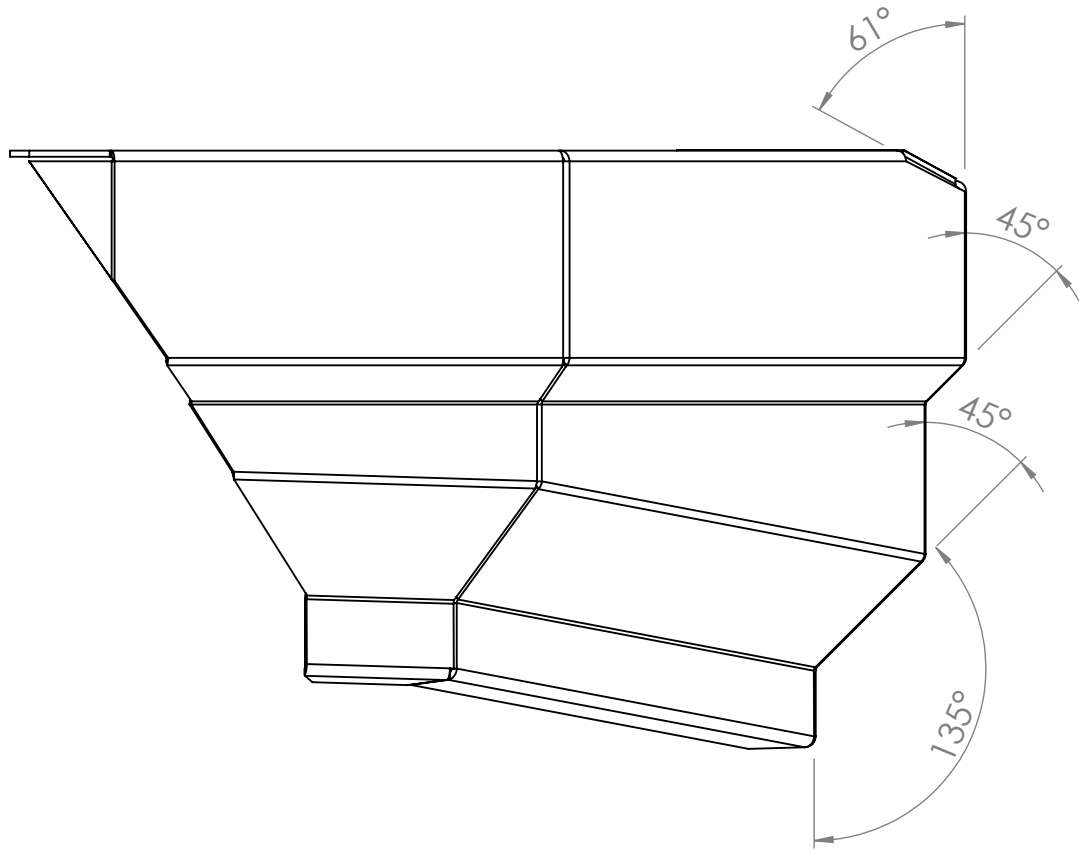
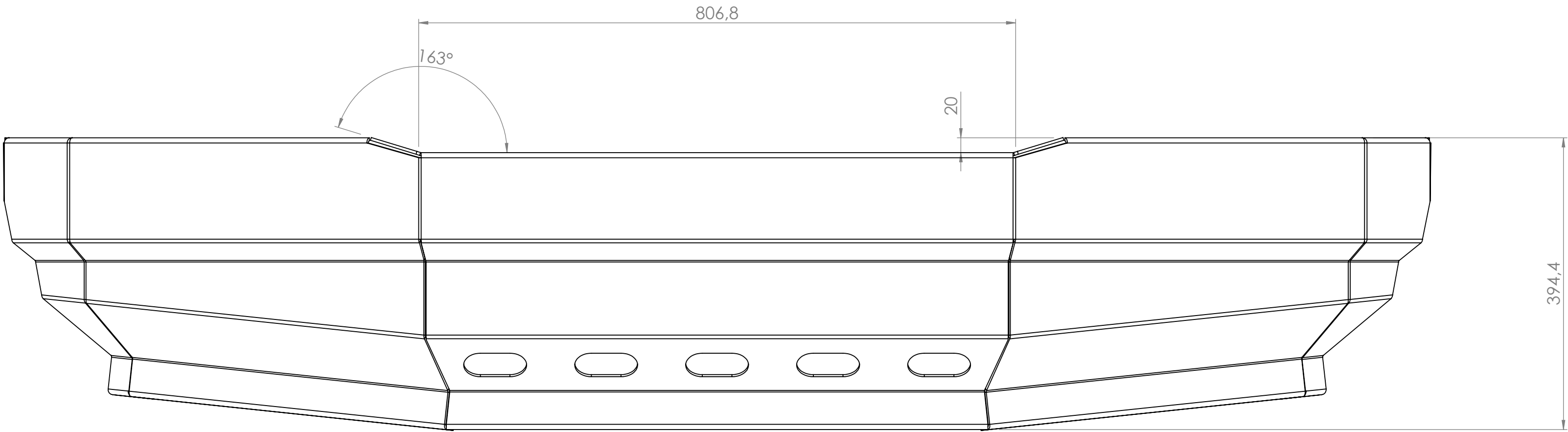
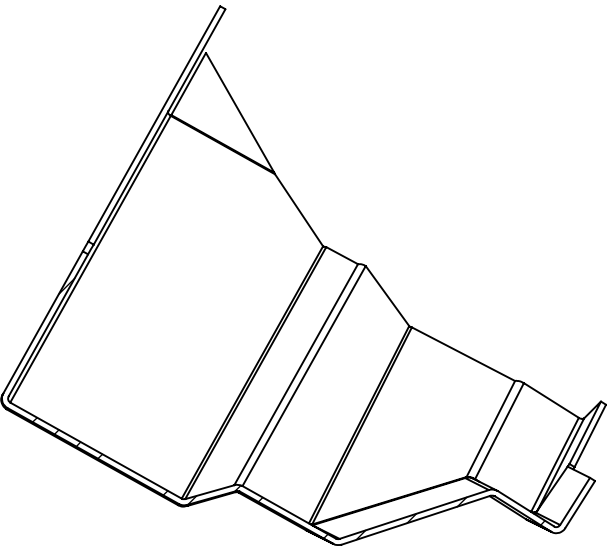


REV	DESCRIPTION	DATE	DRAWN	CHECKED

√ (√) ALL SHARP EDGES REMOVED



SECTION B-B

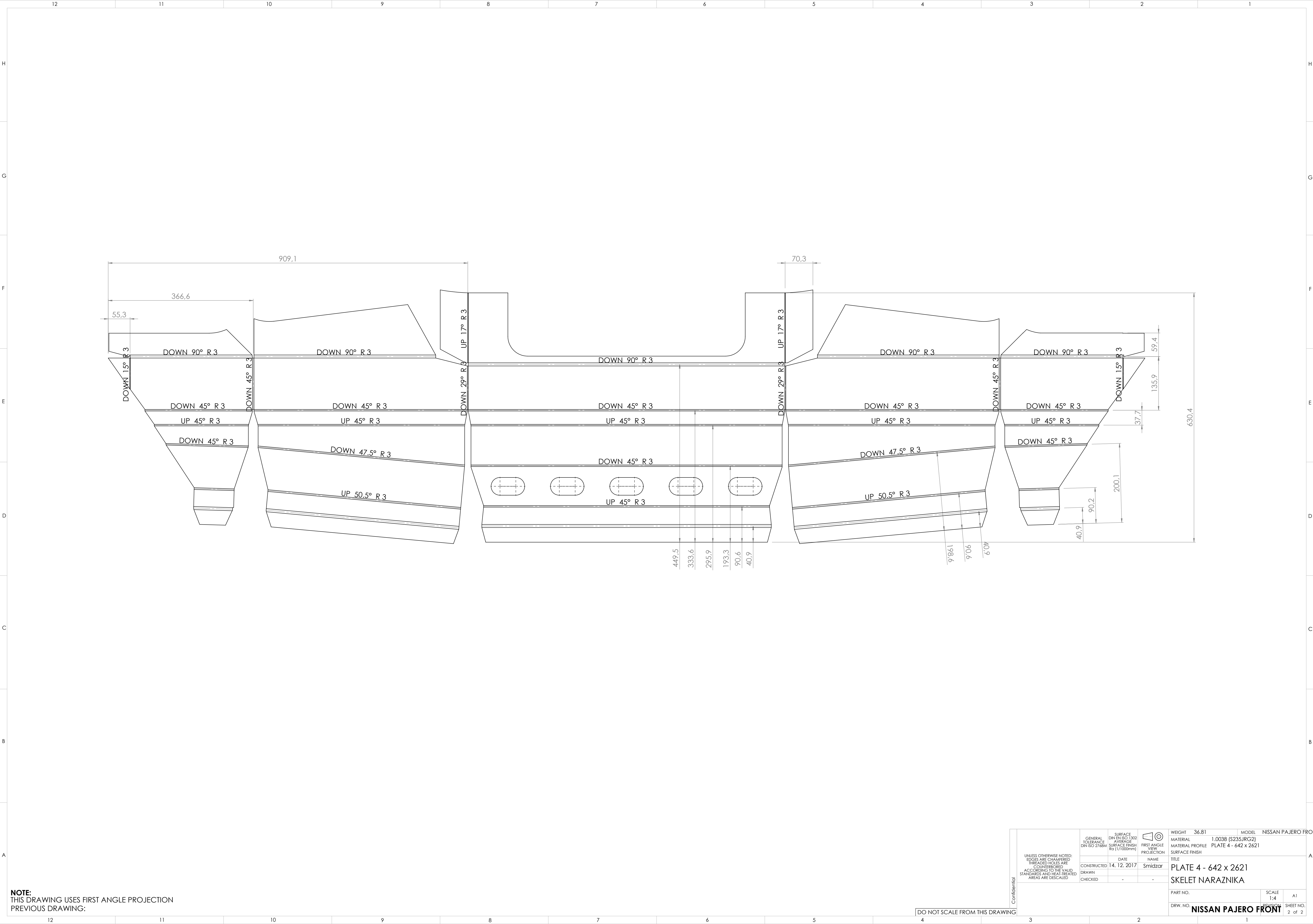


SECTION C-C

NOTE:
THIS DRAWING USES FIRST ANGLE PROJECTION
PREVIOUS DRAWING:


Confidential © STROUSROS M.R.Stefanika 2258, 02401 Dolný Kubín, Slovakia, www.strojasros.sk	COPYING OR PASSING ON TO THIRD PARTIES ONLY WITH APPROVAL BY STROUSROS s.r.o. ACCORDING TO ISO 16016 UNLESS OTHERWISE NOTED: EDGES ARE CHAMFERED THREADED HOLES ARE COUNTERBORED ACCORDING TO THE VALID STANDARDS AND HEAT-TREATED AREAS ARE DESCALED	GENERAL TOLERANCE DIN ISO 2768M	SURFACE DIN EN ISO 1302 AVERAGE SURFACE FINISH Ra (1/1000mm)	FIRST ANGLE VIEW PROJECTION	WEIGHT 36,81	MODEL NISSAN PAJERO FRONT
		DATE CONSTRUCTED 14.12.2017	NAME Smidzar	TITLE PLATE 4 - 642 x 2621 SKELET NARAZNIKA	PART NO.	SCALE 1:5
		DRAWN CHECKED			DRW. NO. NISSAN PAJERO FRONT	SHEET NO. 1 of 2

DO NOT SCALE FROM THIS DRAWING



NOTE:
THIS DRAWING USES FIRST ANGLE PROJECTION
PREVIOUS DRAWING:

DO NOT SCALE FROM THIS DRAWING

Confidential	UNLESS OTHERWISE NOTED: EDGES ARE CHAMFERED THREADED HOLES ARE COUNTERBORED ACCORDING TO THE VALID STANDARDS AND HEAT-TREATED AREAS ARE DECALED	GENERAL TOLERANCE DIN ISO 2768M	SURFACE FINISH DIN EN ISO 1302 AVERAGE SURFACE FINISH Ra (1/1000mm)		WEIGHT 36.81	MODEL NISSAN PAJERO FRONT
				FIRST ANGLE VIEW PROJECTION	MATERIAL 1.0038 (S235JRG2)	
					MATERIAL PROFILE PLATE 4 - 642 x 2621	
					SURFACE FINISH	
		DATE 14. 12. 2017	NAME Smidzar	TITLE		
		CONSTRUCTED 14. 12. 2017		PLATE 4 - 642 x 2621		
		DRAWN				
		CHECKED -	-	SKELET NARAZNIKA		
NG				PART NO.	SCALE 1:4	A1
				DRW. NO.	REVISION	SHEET NO. 2 of 2
				NISSAN PAJERO FRONT		